



ML# N6135507 **List Price:** \$20,000
Address: 3328 GOLDFINCH TER, ENGLEWOOD
 Florida 34224-8787
Lot Size (AC): 0.18 **Lot Size SF:** 7,800
Subdivision: SANDALHAVEN ESTATES
Year Built: 78x100 **Lot #:** 10
Lot Dim: 0 to less than 1/4 **Price/Acre:** 111,111
Acresage: No
Water Access: No
Water Front: No



All content displayed within this website is deemed reliable, but not guaranteed. Website users are advised to verify all information with their real estate representative. Copyright© My Florida Regional MLS DBA Stellar MLS. [Digital Millenium Copyright Act Take Down Notice](#)

Accessibility Issues?

We want this website to be accessible to everyone. If you experience any accessibility problems using the website, please contact our ADA support hotline at **844-209-0134** to report the issue and for assistance getting the information you need.

N6135557 1439 STRADA D ARGENTO, VENICE, Sarasota county, FL 34292



ML# N6135557 **List Price:** \$398,000
Heated Area: 1,307 SqFt / 121 SqM
Beds: 3 **Baths:** 2/0 **Year Built:** 1980
Subdivision: CARLENTINI
Gar / Car: Gar = 2
Acreage: 1/4 to less than 1/2
Pool: None
Water Front: Yes-Creek
Water Access: No



All content displayed within this website is deemed reliable, but not guaranteed. Website users are advised to verify all information with their real estate representative. Copyright© My Florida Regional MLS DBA Stellar MLS. [Digital Millenium Copyright Act Take Down Notice](#)

Accessibility Issues?

We want this website to be accessible to everyone. If you experience any accessibility problems using the website, please contact our ADA support hotline at **844-209-0134** to report the issue and for assistance getting the information you need.

N6135441 8920 BANTRY BAY BLVD, ENGLEWOOD, Charlotte county, FL 34224

Auction



ML# N6135441
Heated Area: 1,563 SqFt / 145 SqM
Beds: 3 **Baths:** 2/0 **Year Built:** 1998
Subdivision: SHAMROCK SHORES 1ST ADD
Gar /Car: Gar = 3
Acreage: 1/4 to less than 1/2
Pool: Private
Water Front: No
Water Access: No

Auction Property.



All content displayed within this website is deemed reliable, but not guaranteed. Website users are advised to verify all information with their real estate representative. Copyright© My Florida Regional MLS DBA Stellar MLS. [Digital Millenium Copyright Act Take Down Notice](#)

Accessibility Issues?

We want this website to be accessible to everyone. If you experience any accessibility problems using the website, please contact our ADA support hotline at **844-209-0134** to report the issue and for assistance getting the information you need.

N6134188 3364 GOLDFINCH LN, ENGLEWOOD, Charlotte county, FL 34224



ML#	N6134188	List Price:	\$219,500
Heated Area:	1,104 SqFt / 103 SqM	Year Built:	1980
Beds:	2	Baths:	2/0
Subdivision:	GASPARILLA PINES		
Gar / Car:	Car = 1		
Acreage:	0 to less than 1/4		
Pool:	None		
Water Front:	No		
Water Access:	No		



All content displayed within this website is deemed reliable, but not guaranteed. Website users are advised to verify all information with their real estate representative. Copyright© My Florida Regional MLS DBA Stellar MLS. [Digital Millenium Copyright Act Take Down Notice](#)

Accessibility Issues?

We want this website to be accessible to everyone. If you experience any accessibility problems using the website, please contact our ADA support hotline at **844-209-0134** to report the issue and for assistance getting the information you need.

N6131375 3100 GOLDFINCH TER, ENGLEWOOD, Charlotte county, FL 34224



ML#	N6131375	List Price:	\$259,000
Heated Area:	1,404 SqFt / 130 SqM	Year Built:	2017
Beds:	2	Baths:	2/0
Subdivision:	GASPARILLA PINES		
Gar/Car:	Car = 2		
Acreage:	0 to less than 1/4		
Pool:	None		
Water Front:	No		
Water Access:	No		



All content displayed within this website is deemed reliable, but not guaranteed. Website users are advised to verify all information with their real estate representative. Copyright© My Florida Regional MLS DBA Stellar MLS. [Digital Millenium Copyright Act Take Down Notice](#)

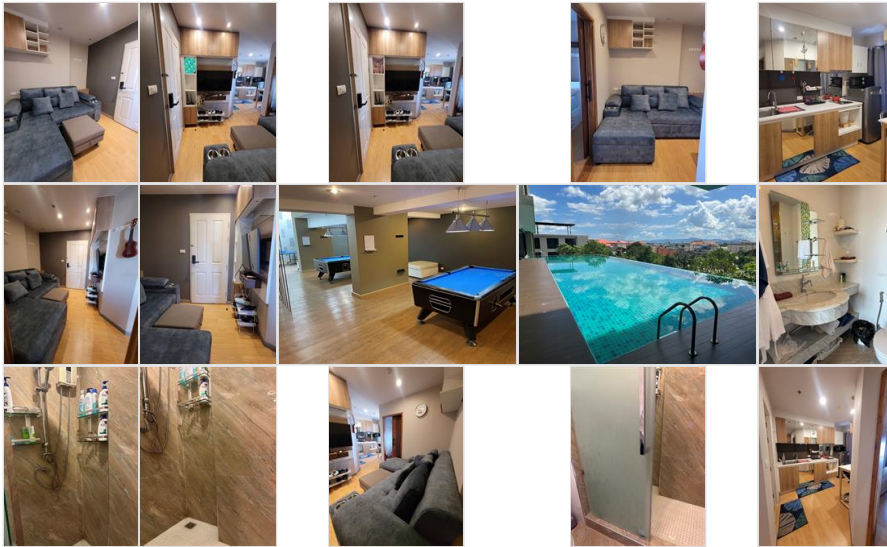
Accessibility Issues?

We want this website to be accessible to everyone. If you experience any accessibility problems using the website, please contact our ADA support hotline at **844-209-0134** to report the issue and for assistance getting the information you need.

N6131080 2F36+QG2 HATYAI SONGKHLA THAILAND, HATYAI, Out of Area county, OC



ML#	N6131080	List Price:	\$75,000
Heated Area:	30 SqFt / 3 SqM		
Beds:	1	Baths:	1/0
Subdivision:		Year Built:	2019
Gar / Car:			
Acreage:	0 to less than 1/4		
Pool:	Community		
Water Front:	No		
Water Access:	No		



All content displayed within this website is deemed reliable, but not guaranteed. Website users are advised to verify all information with their real estate representative. Copyright© My Florida Regional MLS DBA Stellar MLS. [Digital Millenium Copyright Act Take Down Notice](#)

Accessibility Issues?

We want this website to be accessible to everyone. If you experience any accessibility problems using the website, please contact our ADA support hotline at **844-209-0134** to report the issue and for assistance getting the information you need.

N6130755 9145 PINEHAVEN WAY, ENGLEWOOD, Charlotte county, FL 34224



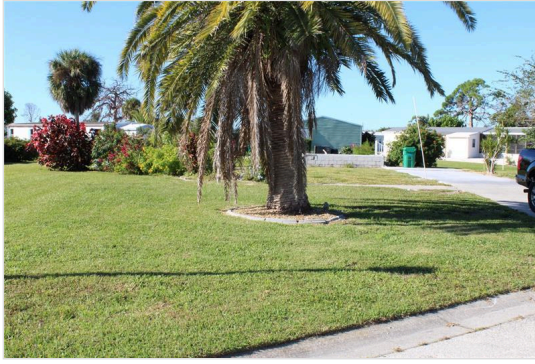
ML#	N6130755	List Price:	\$259,900
Heated Area:	1,836 SqFt / 171 SqM	Year Built:	2004
Beds:	3	Baths:	2/0
Subdivision:	PINES AT SANDALHAVEN		
Gar / Car:	Car = 2		
Acreage:	0 to less than 1/4		
Pool:	Community		
Water Front:	Yes-Pond		
Water Access:	No		



All content displayed within this website is deemed reliable, but not guaranteed. Website users are advised to verify all information with their real estate representative. Copyright© My Florida Regional MLS DBA Stellar MLS. [Digital Millenium Copyright Act Take Down Notice](#)

Accessibility Issues?

We want this website to be accessible to everyone. If you experience any accessibility problems using the website, please contact our ADA support hotline at **844-209-0134** to report the issue and for assistance getting the information you need.



ML# N6129131 **List Price:** \$64,900
Address: 3304 CATBIRD LN, ENGLEWOOD
 Florida 34224-8970
Lot Size (AC): 0.18 **Lot Size SF:** 7,668
Subdivision: GASPARILLA PINES **Lot #:** 25
Year Built: **Price/Acre:** 360,556
Lot Dim: 66x116x100x84
Acresage: 0 to less than 1/4
Water Access: No
Water Front: No



All content displayed within this website is deemed reliable, but not guaranteed. Website users are advised to verify all information with their real estate representative. Copyright© My Florida Regional MLS DBA Stellar MLS. [Digital Millenium Copyright Act Take Down Notice](#)

Accessibility Issues?

We want this website to be accessible to everyone. If you experience any accessibility problems using the website, please contact our ADA support hotline at **844-209-0134** to report the issue and for assistance getting the information you need.



ML# N6128881 **List Price:** \$65,000
Address: 3303 DOVE LN, ENGLEWOOD
 Florida 34224-8780
Lot Size (AC): 0.20 **Lot Size SF:** 8,925
Subdivision: GASPARILLA PINES **Lot #:** 46
Year Built: **Price/Acre:** 325,000
Lot Dim: 85x105
Acresage: 0 to less than 1/4
Water Access: No
Water Front: No



All content displayed within this website is deemed reliable, but not guaranteed. Website users are advised to verify all information with their real estate representative. Copyright© My Florida Regional MLS DBA Stellar MLS. [Digital Millenium Copyright Act Take Down Notice](#)

Accessibility Issues?

We want this website to be accessible to everyone. If you experience any accessibility problems using the website, please contact our ADA support hotline at **844-209-0134** to report the issue and for assistance getting the information you need.